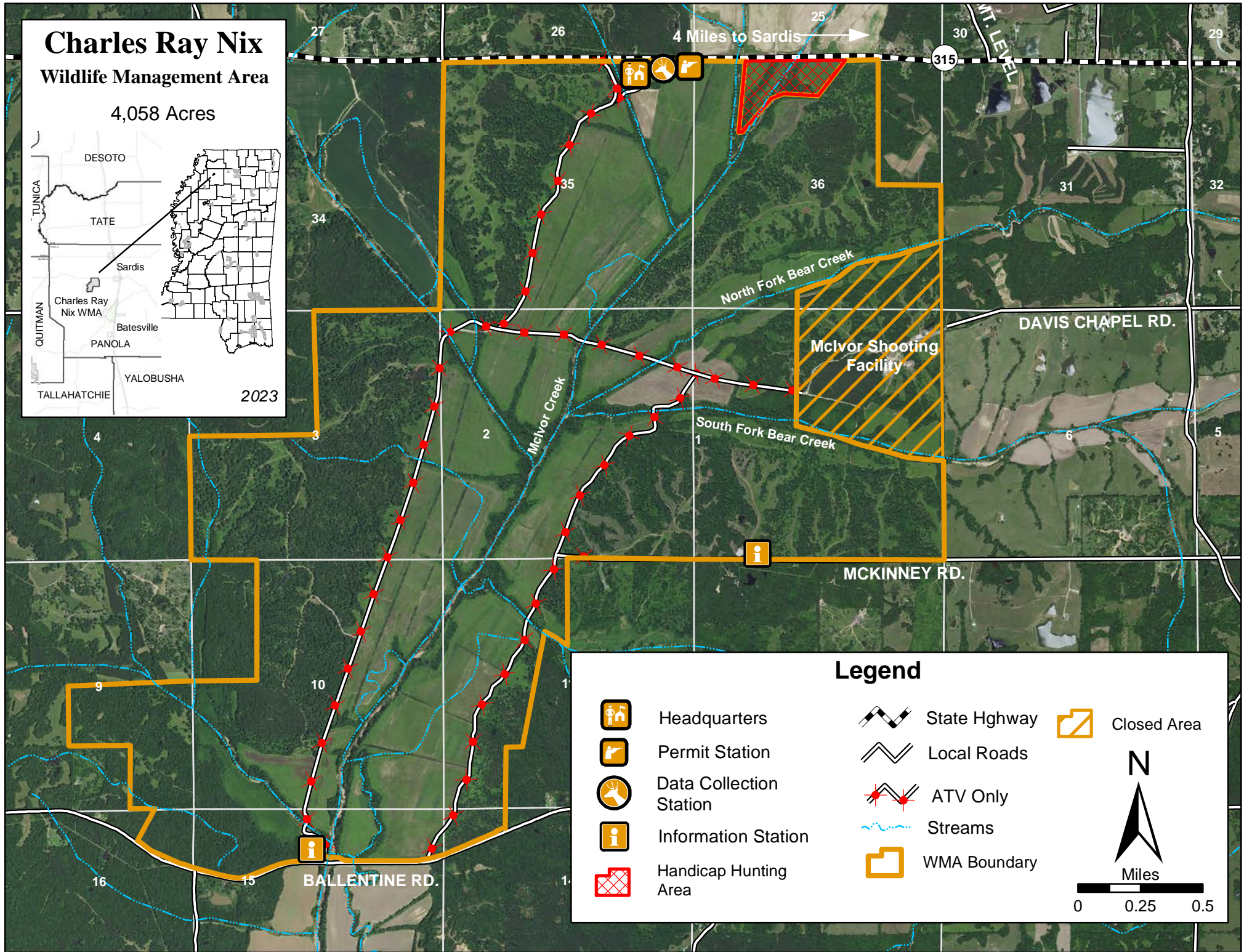
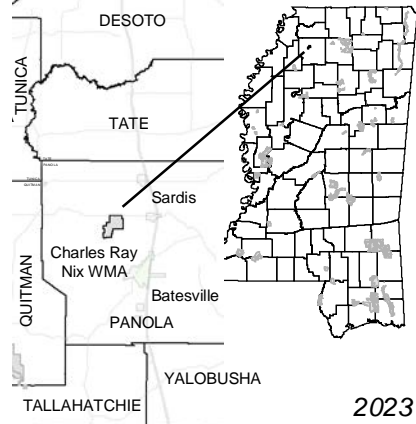


Charles Ray Nix Wildlife Management Area

4,058 Acres



4 Miles to Sardis

315

MT. LEVEL

DAVIS CHAPEL RD.

MCKINNEY RD.

BALLENTINE RD.

Legend

- Headquarters
- Permit Station
- Data Collection Station
- Information Station
- Handicap Hunting Area
- State Highway
- Local Roads
- ATV Only
- Streams
- WMA Boundary
- Closed Area

